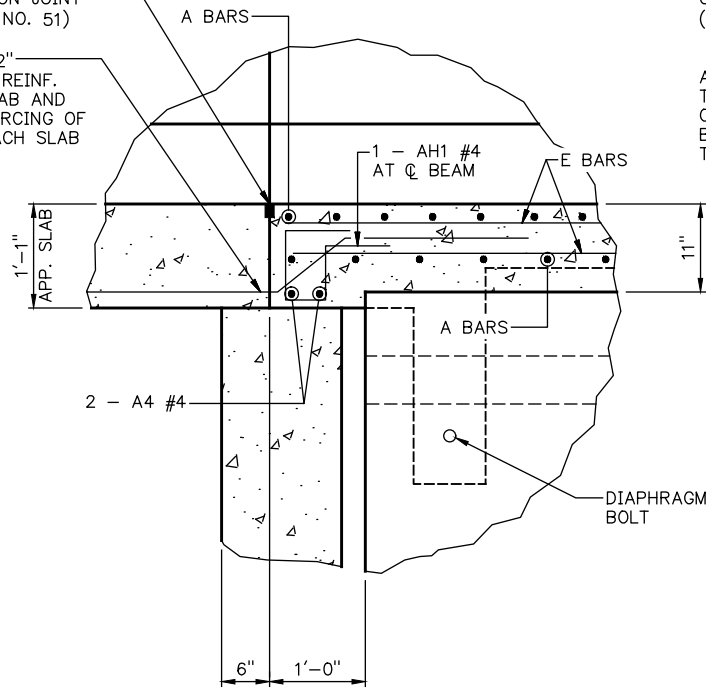


1/2" SAWED AND SEALED CONSTRUCTION JOINT (SEE SHEET NO. 51)

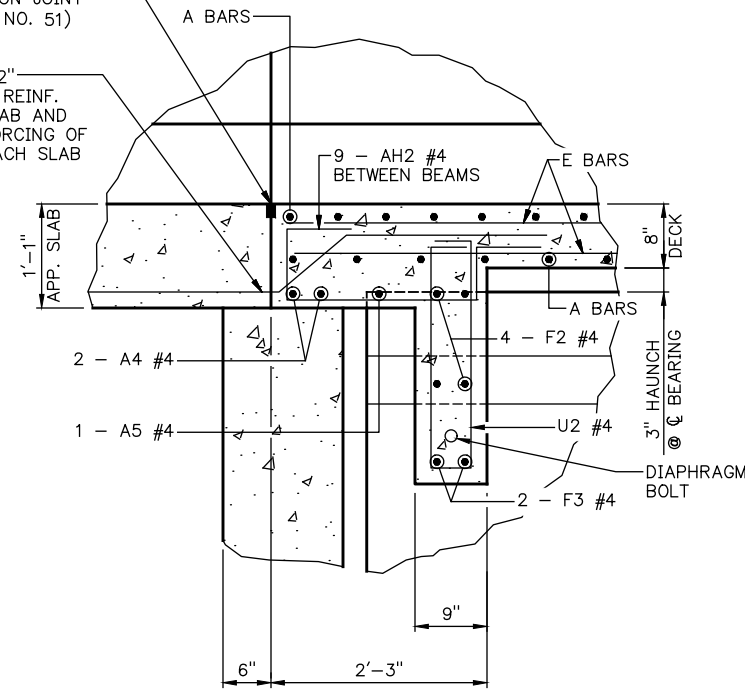
AS1 #4 @ 12" TIE TO TOP REINF. OF DECK SLAB AND BOT. REINFORCING OF THE APPROACH SLAB



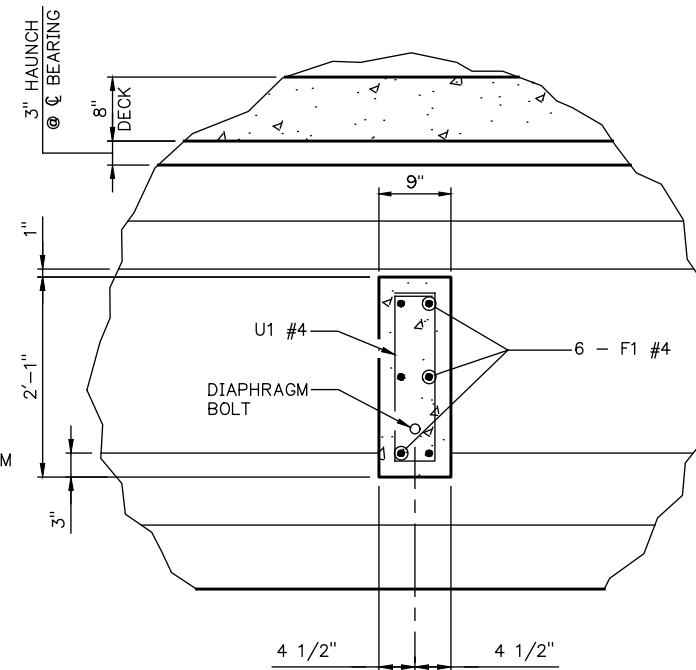
DETAIL "A" (AT BEAM C)

1/2" SAWED AND SEALED CONSTRUCTION JOINT (SEE SHEET NO. 51)

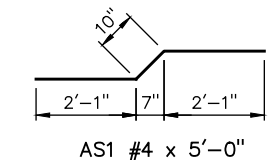
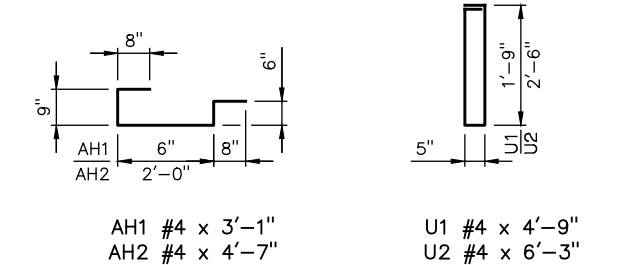
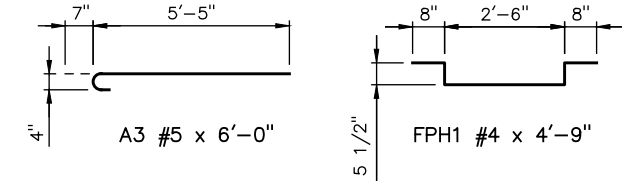
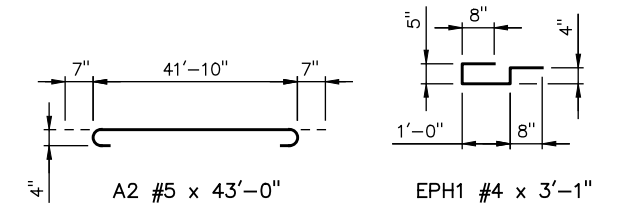
AS1 #4 @ 12" TIE TO TOP REINF. OF DECK SLAB AND BOT. REINFORCING OF THE APPROACH SLAB



DETAIL "A" (BTWN. BEAMS)



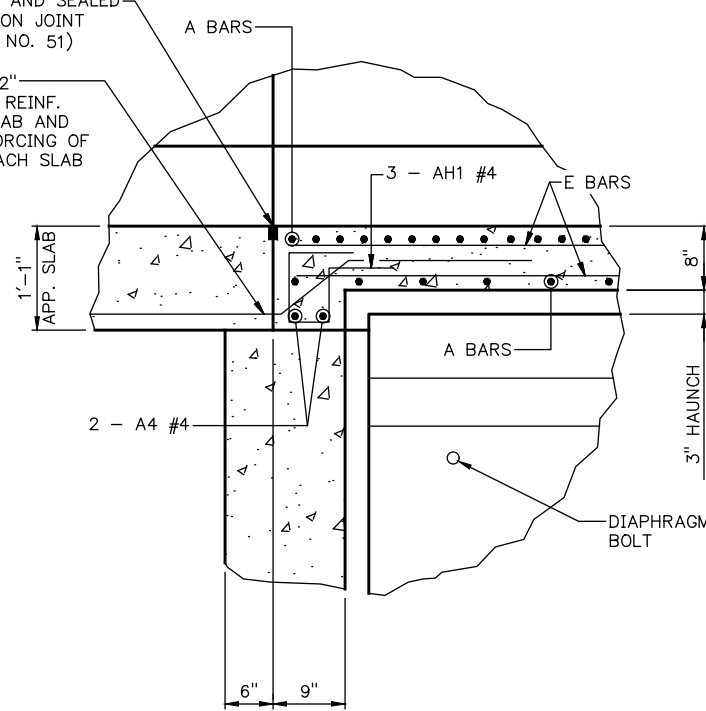
INTERMEDIATE DIAPHRAGM



BAR BEND DETAILS

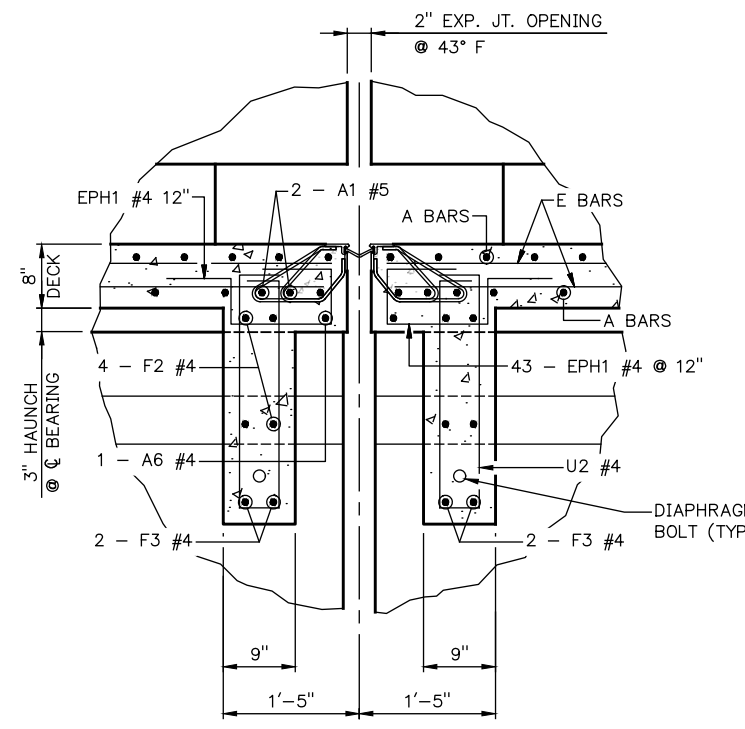
1/2" SAWED AND SEALED CONSTRUCTION JOINT (SEE SHEET NO. 51)

AS1 #4 @ 12" TIE TO TOP REINF. OF DECK SLAB AND BOT. REINFORCING OF THE APPROACH SLAB



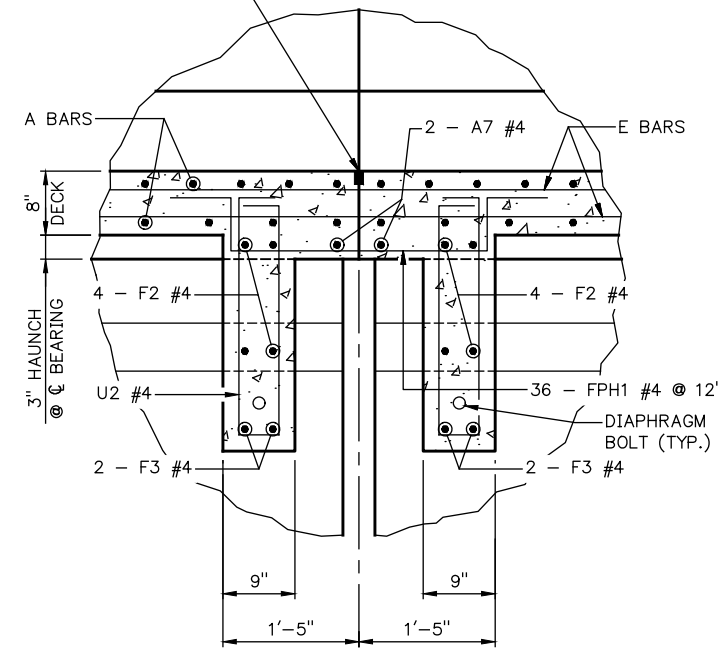
DETAIL "A" (AT CANTILEVERS)

2" EXP. JT. OPENING @ 43° F

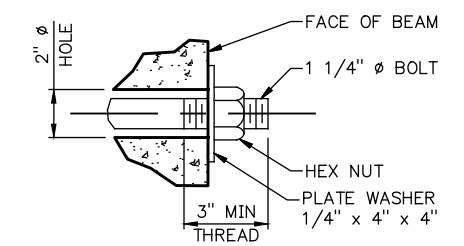


DETAIL "B"

1/2" SAWED AND SEALED CONSTRUCTION JOINT (SEE SHEET NO. 51)



DETAIL "C"



DIAPHRAGM BOLT DETAIL

DIAPHRAGM BOLT NOTE: STRUCTURAL STEEL FOR DIAPHRAGM BOLTS AND PLATE WASHERS SHALL CONFORM TO AASHTO M270 (ASTM A709), GRADE 50W (WEATHERING STEEL, CHARPY V-NOTCH TESTING NOT REQUIRED). A #10 REINFORCING BAR CONFORMING TO AASHTO M31, GRADE 60, AND THREADED AT THE ENDS AS SHOWN MAY BE SUBSTITUTED FOR THE DIAPHRAGM BOLT. HEX NUTS SHALL CONFORM TO AASHTO M291 (ASTM A563). PAINT EXPOSED DIAPHRAGM BOLT, HEX NUTS AND PLATE WASHERS WITH TWO (2) COATS OF ZINC RICH PAINT (6 MIL. THICKNESS) AFTER ASSEMBLY. ALL COSTS OF DIAPHRAGM BOLTS, PLATE WASHERS AND HEX NUTS TO BE INCLUDED IN THE PRICE BID FOR "STRUCTURAL STEEL".

DIAPHRAGM DETAILS

(SHEET 1 OF 2)
BRIDGE "A" C.R.L. STA. 586+80.46